

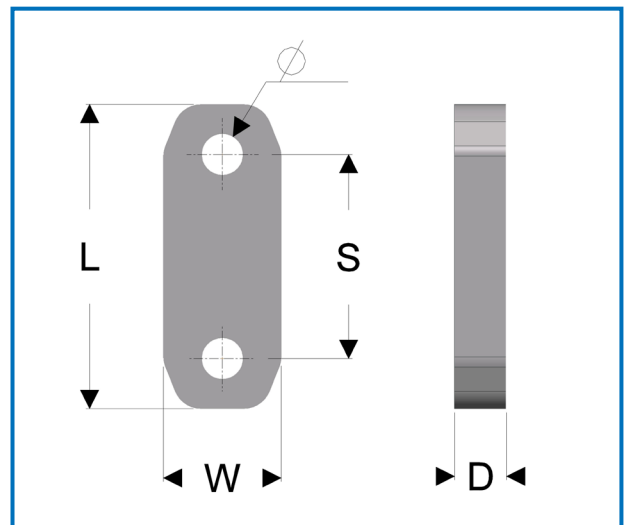
Delphi Measurement manufactures a variety of bespoke tension measuring sensors to fit our customers equipment. Over the years a popular design of the "plate cell" has evolved. These cells are used in many industries, where measurement of a pulling or tension force is required. Our simple, rugged design makes them suitable for the harshest environments. These load cells are manufactured from high quality 630 (17-4PH) Stainless Steel,

The load cells are available in cabled or wireless versions. The cabled versions are used in permanent mount installations and the wireless versions are typically used in portable applications.

- Hardened 630 Stainless Steel
- Light single piece design (no bushings)
- IP67 rated load cell
- 6:1 Safety Factor
- Wired/wireless portable kits available
- Custom Variations available (100kg to 100t)
- Made in Australia

The Delphi 100T Tension Cell range; made from 630 Stainless Steel (17-4PH) are used in cable lifting, strength testing, winching and tensioning applications. IP67 rated, with integral connector and removable cable.

Model No.	Range (t)	L (mm)	W (mm)	D (mm)	S (mm)	Ø (mm)
100T-0.5#	0.5	62	22	11	44	9
100T-0.75#	0.75	70	23	12	46	11
100T-1#	1	80	29	15	52	13
100T-1.5#	1.5	90	32	16	58	15
100T-2#	2	100	36	18	64	18
100T-5S	5	151	50.8	30	100	23
100T-2.5	2.5	220	78	20	150	23
100T-5	5	240	78	25	158	28
100T-10	10	260	78	25	158	42
100T-15	15	260	78	25	158	42
100T-20	20	260	78	25	158	42
100T-25	25	324	100	50	204	53
100T-35	35	324	110	60	204	60
100T-50	50	364	122	70	222	72



Accuracy*	Better than 0.5% of range Typically ±0.1% BSL
Overload	200% (no damage) 600% (ultimate)
Thermal Temperature	0.005%/°C on output or zero shift 10°C to +60°C (compensated) -10°C to +80°C (operating)
Excitation Output	<12V DC mV/V or optional amplified current or voltage

*Accuracy includes linearity, hysteresis and creep.
#Available with wireless option